

# MONTHLY MEMBERSHIP PROGRESS REPORT

District 201V14

Results as of: 5/31/2020

GMT:

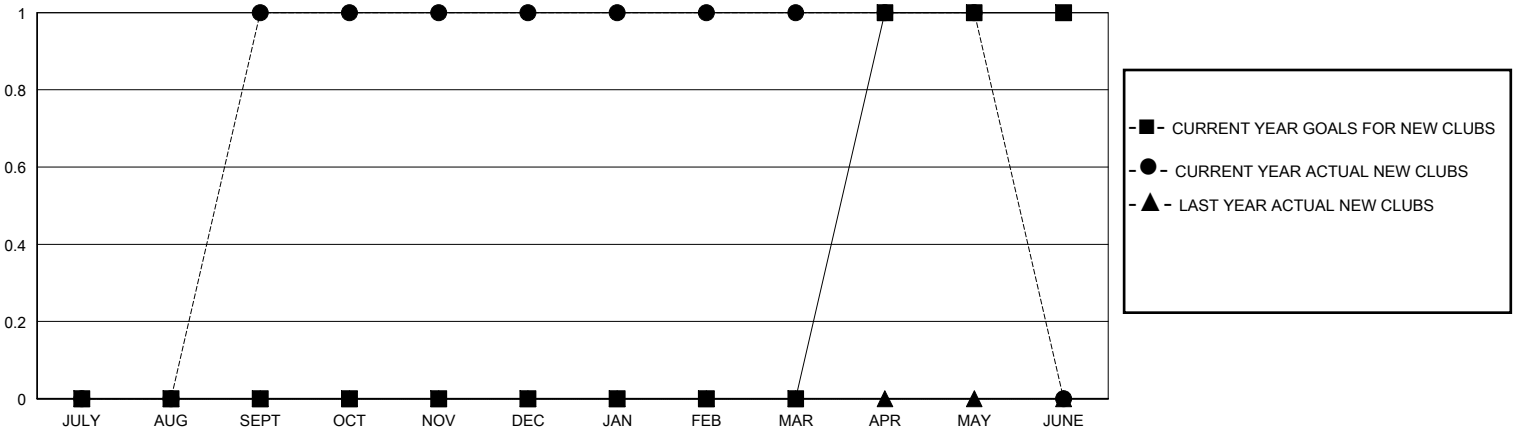
LOCATION AUSTRALIA

GMT CA

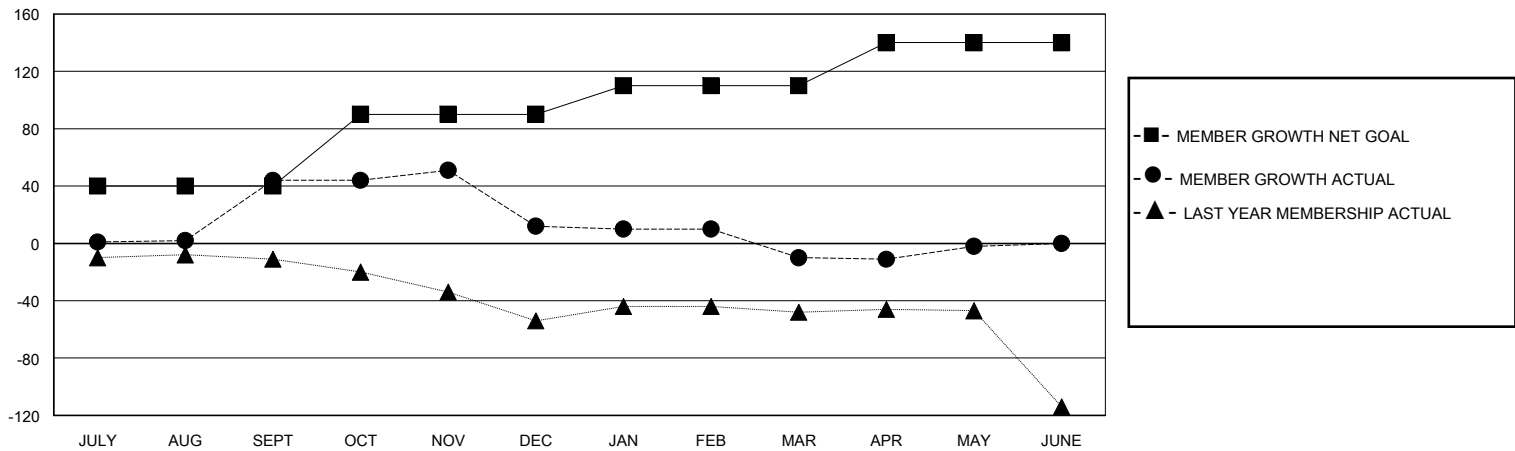
Clubs			
RESULTS FOR 2019-2020			
QUARTER	NEW CLUB GOAL	NEW CLUBS	DROPPED CLUBS
JULY/AUG/SEPT	0	1	1
OCT/NOV/DEC	0	0	0
JAN/FEB/MAR	0	0	0
APR/MAY/JUNE	1	0	0

Members			
RESULTS FOR 2019-2020			
QUARTER	MEMBER GROWTH NET GOAL	MEMBER GROWTH ACTUAL	DROPPED MEMBERS ACTUAL (including transfers)
JULY/AUG/SEPT	40	70	24
OCT/NOV/DEC	50	29	61
JAN/FEB/MAR	20	38	55
APR/MAY/JUNE	30	19	10

GOALS AND ACTUAL NEW CLUBS CUMULATIVE



GOALS AND ACTUAL MEMBERS CUMULATIVE



DROPPED CLUBS: 1

45 CLUBS OF 75 ADDED 1 OR MORE NEW MEMBERS

GENDER DISTRIBUTION

MALE 901 (69.47%)  
FEMALE 396 (30.53%)

DROPPED MEMBERS

DECEASED	13
CLUB CANCELLED	0
OTHER	137
<b>TOTAL</b>	<b>150</b>

[CLICK HERE FOR CUMULATIVE MEMBERSHIP DATA](#)

TOTAL FAMILY UNIT MEMBERS	142
FAMILY MEMBERS PAYING HALF DUES	72